

test number of pages \$n on all pages on all parts

A musical score for four voices: Soprano, Alto, Tenor, and Bass. The score is written in 4/4 time. Each part is on a five-line staff. The Soprano, Alto, and Tenor parts use a treble clef, while the Bass part uses a bass clef. The Tenor part has an '8' below the staff, indicating an octave shift. Each staff contains a single measure with a whole note, represented by a small black rectangle on the staff line.

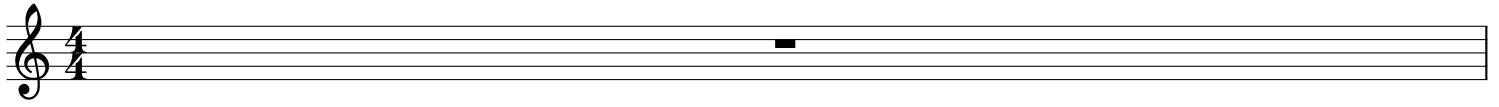
source = <https://musescore.com/score/1048316>

(page number on all pages) / (number of pages) = 1/2

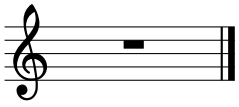
A musical score for four voices: Soprano, Alto, Tenor, and Bass. Each voice part is on a five-line staff. The Soprano, Alto, and Tenor parts use a treble clef, while the Bass part uses a bass clef. Each staff contains a single black rectangular note on the second line from the bottom. The notes are positioned at the same relative height on their respective staves. A large curly brace on the left side groups all four staves together. The Tenor staff has a small '8' below the clef, indicating an octave shift.

source = <https://musescore.com/score/1048316>
(page number on all pages) / (number of pages) = 2/2

Soprano $\frac{\text{page number on all pages}}{\text{number of pages}}$ on all pages on all parts

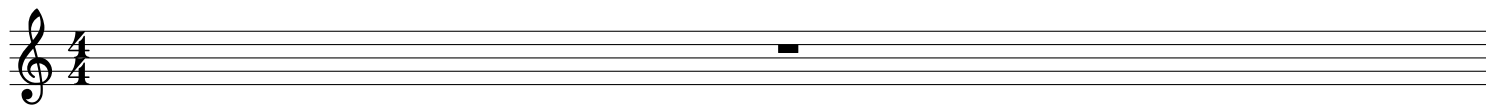


source = <https://musescore.com/score/1048316>
(page number on all pages) / (number of pages) = 3/4



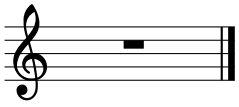
source = <https://musescore.com/score/1048316>
(page number on all pages) / (number of pages) = 4/4

Alto test number of pages \$n on all pages on all parts



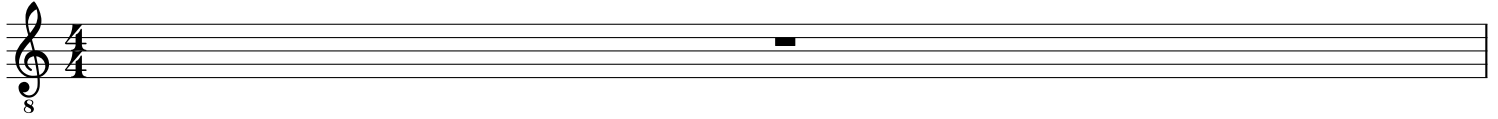
source = <https://musescore.com/score/1048316>

(page number on all pages) / (number of pages) = 5/6

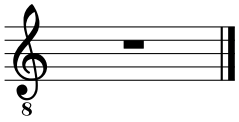


source = <https://musescore.com/score/1048316>
(page number on all pages) / (number of pages) = 6/6

Tenor test number of pages \$n on all pages on all parts

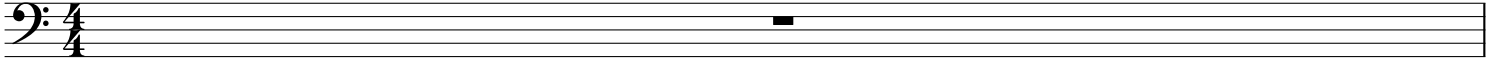


source = <https://musescore.com/score/1048316>
(page number on all pages) / (number of pages) = 7/8

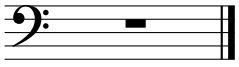


source = <https://musescore.com/score/1048316>
(page number on all pages) / (number of pages) = 8/8

Bass test number of pages \$n on all pages on all parts



source = <https://musescore.com/score/1048316>
(page number on all pages) / (number of pages) = 9/10



source = <https://musescore.com/score/1048316>
(page number on all pages) / (number of pages) = 10/10