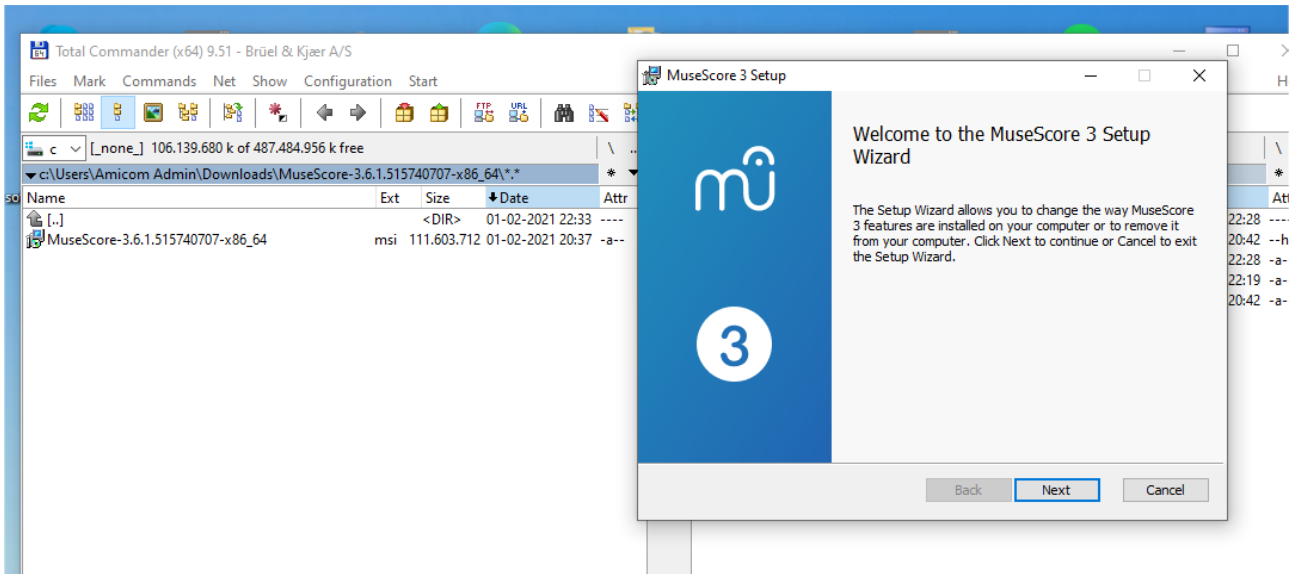
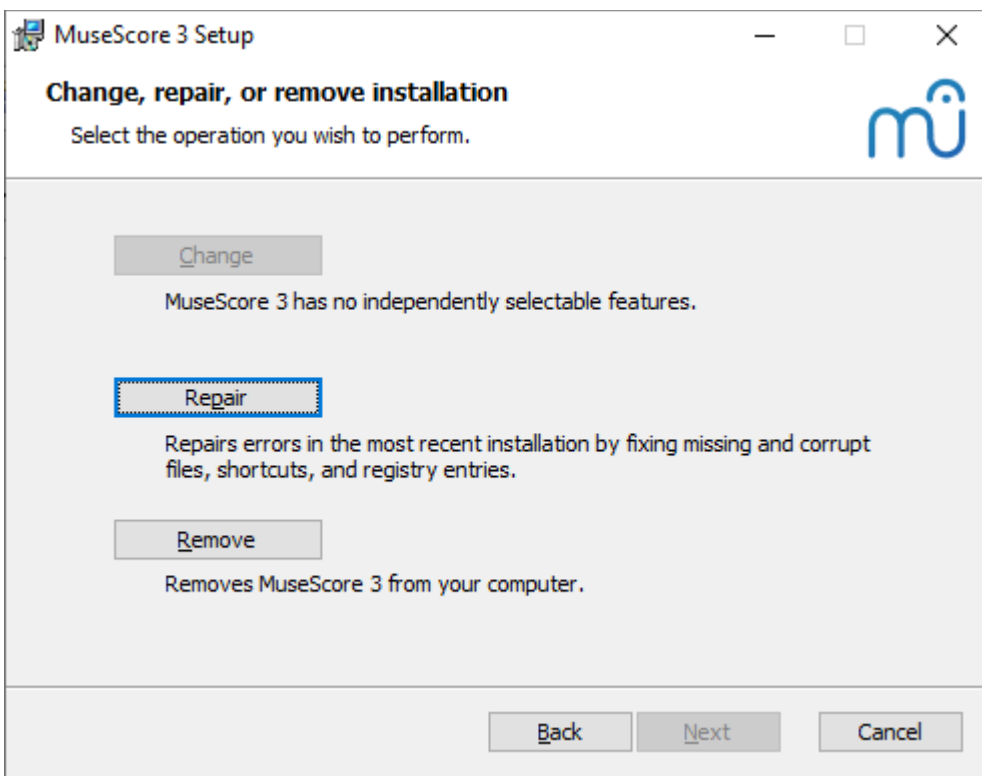


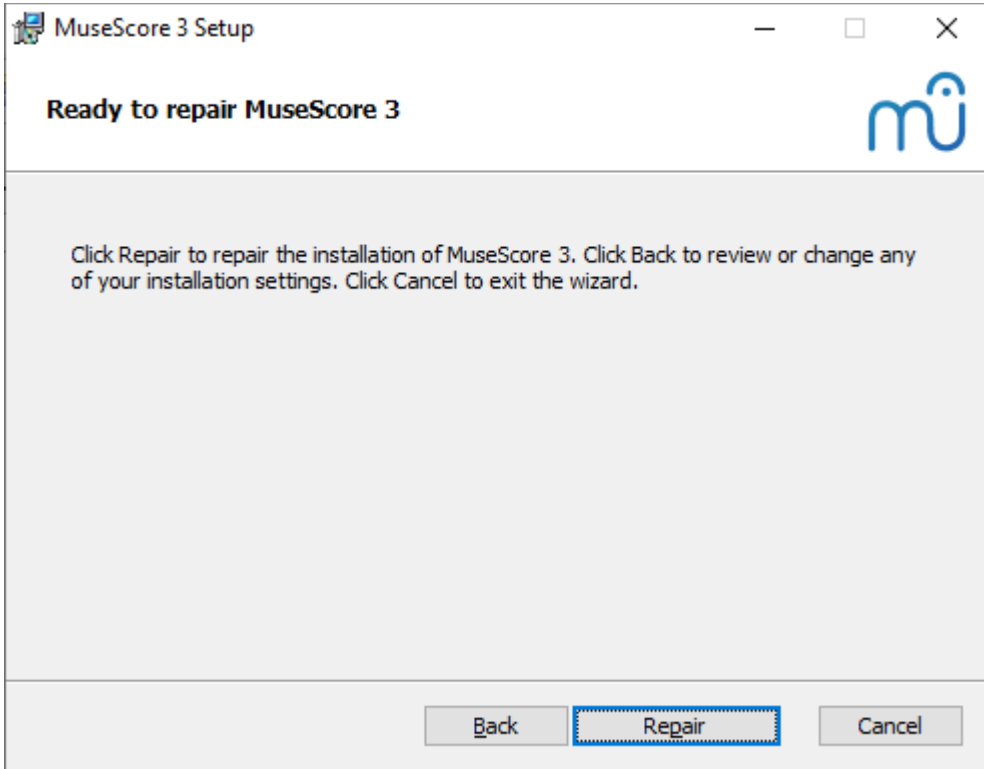
## Restart computer

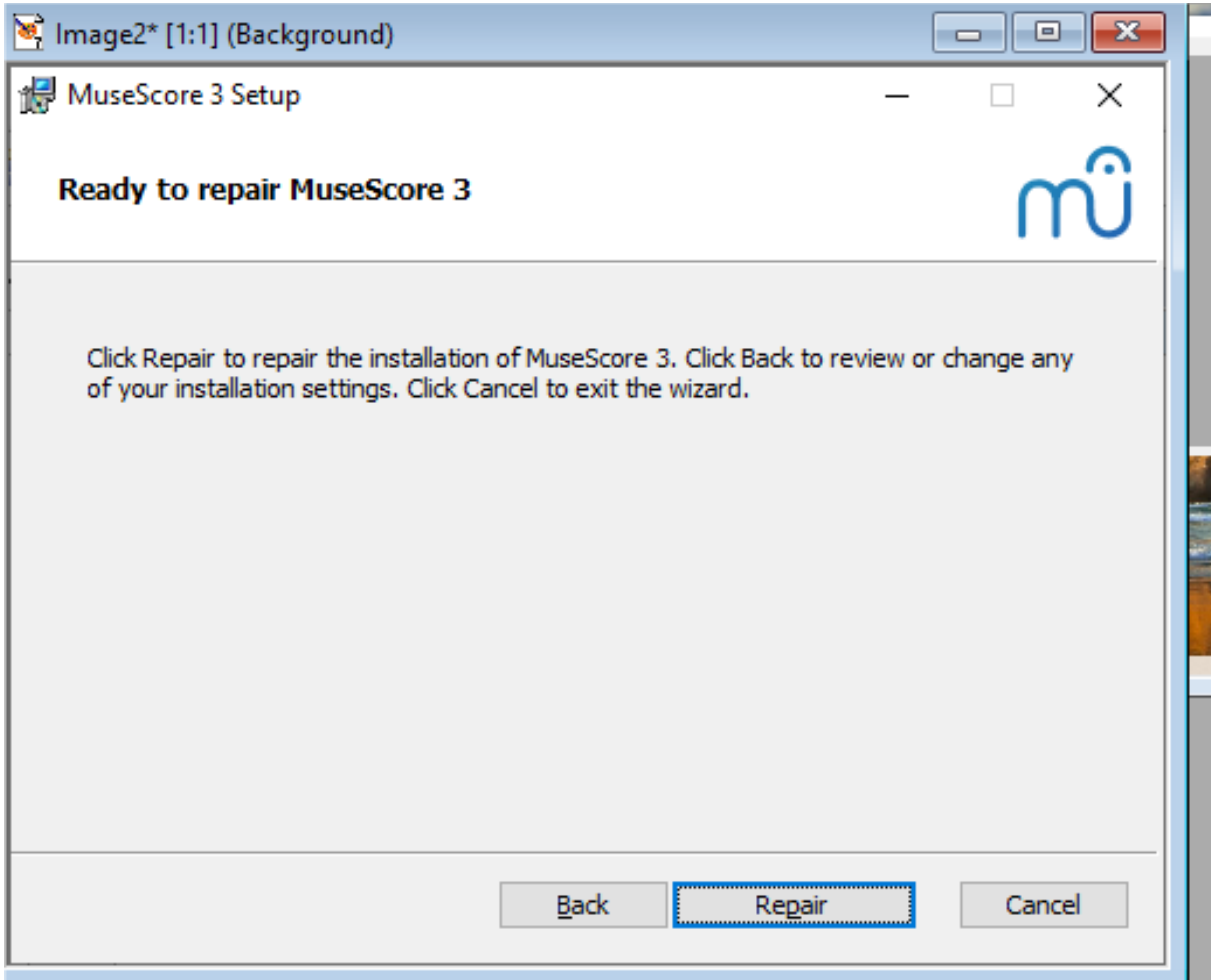


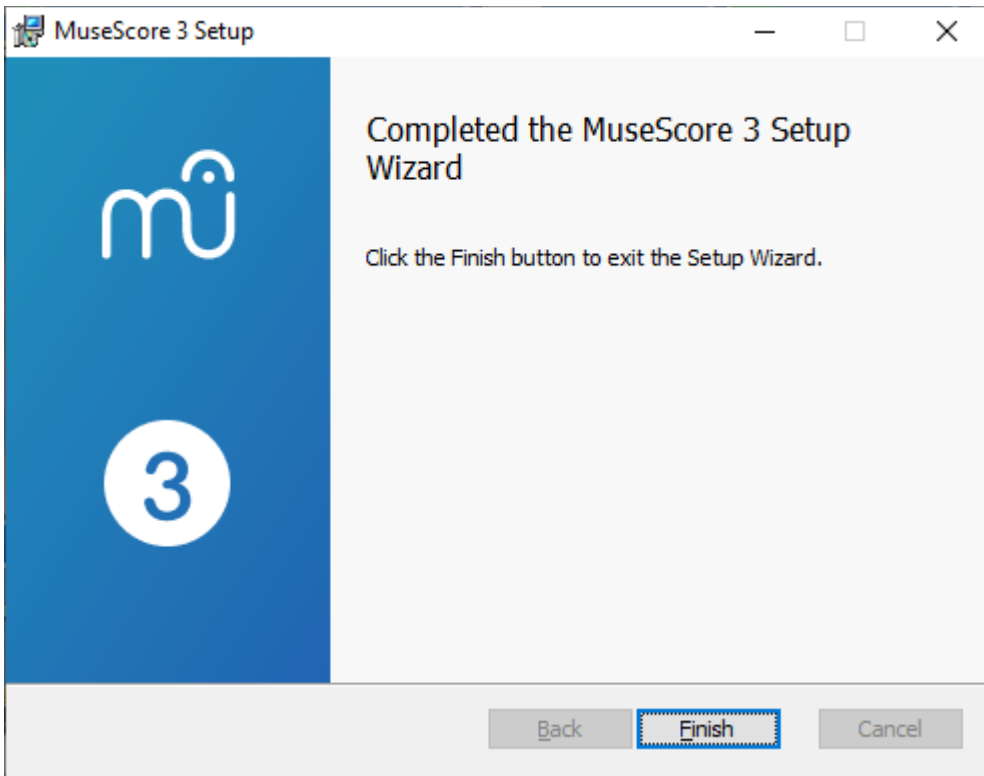
## Reinstall musescore



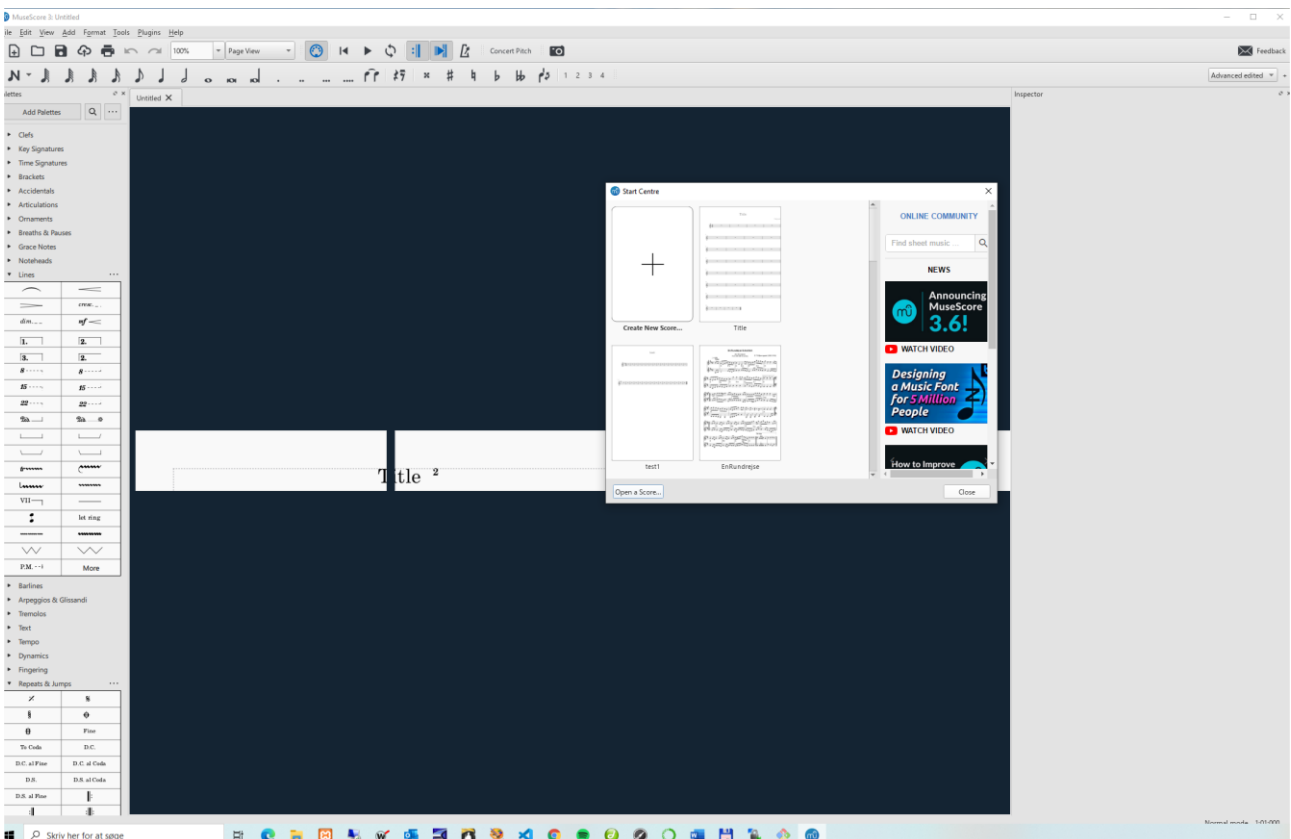
## Repair









## Start MuseScore 3.6.1



 **New Score Wizard** ×

Create New Score  
Enter score information: 

Title:

Subtitle:

Composer:

Lyricist:

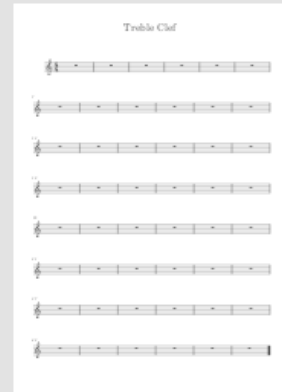
Copyright:

Create New Score  
Choose template file:



Search

- ▼ **General**
  - Choose Instruments
  - Treble Clef**
  - Bass Clef
  - Great Stave
- ▶ **Choral**
- ▶ **Chamber Music**
- ▶ **Solo**
- ▶ **Jazz**
- ▶ **Popular**
- ▶ **Band and Percussion**
- ▶ **Orchestral**



< Back

Next >

Finish

Cancel

Create New Score  
Choose key signature:



Key Signature

A horizontal row of musical staves for key signature selection. The first staff shows a single sharp (#) and is highlighted with a blue background. The second staff shows two sharps (F# and C#). The third staff shows three sharps (F#, C#, and G#). The fourth staff shows four sharps (F#, C#, G#, and D#). The fifth staff shows five sharps (F#, C#, G#, D#, and A#). The sixth staff shows six sharps (F#, C#, G#, D#, A#, and E#). The seventh staff shows one flat (Bb). The eighth staff shows two flats (Bb and Eb). The ninth staff shows three flats (Bb, Eb, and Ab). The tenth staff shows four flats (Bb, Eb, Ab, and Db). The eleventh staff shows five flats (Bb, Eb, Ab, Db, and Gb). The twelfth staff shows six flats (Bb, Eb, Ab, Db, Gb, and Cb). Below this row, there are three empty staves: the first contains a single flat (Bb), the second is empty, and the third contains a large 'X' mark.

Create New Score

Choose time signature and tempo:



Enter Time Signature:

/

C

e

Anacrusis

Duration:  /

Enter number of bars:

Bars:

Hint: You can also add or remove bars after creation of the score.

Tempo

BPM:

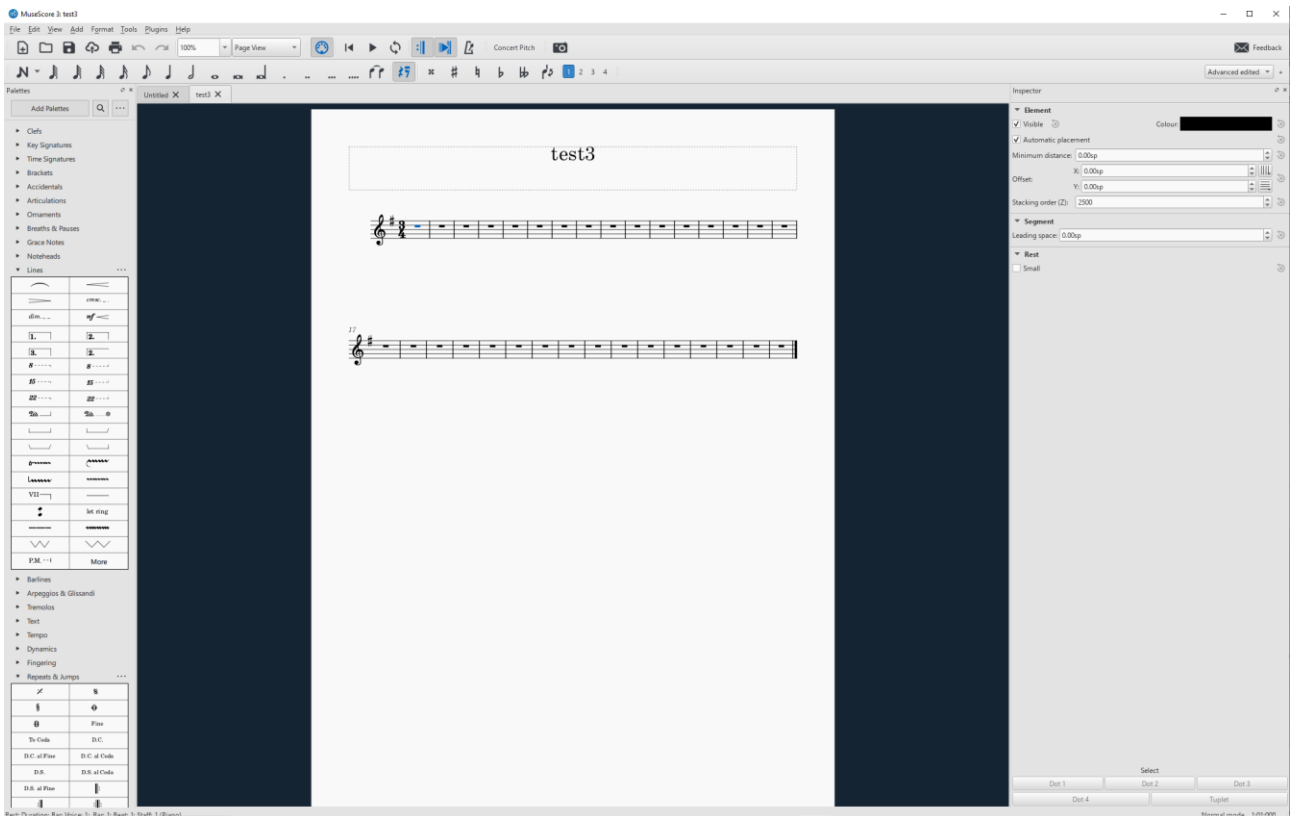
< Back

Next >

Finish

Cancel

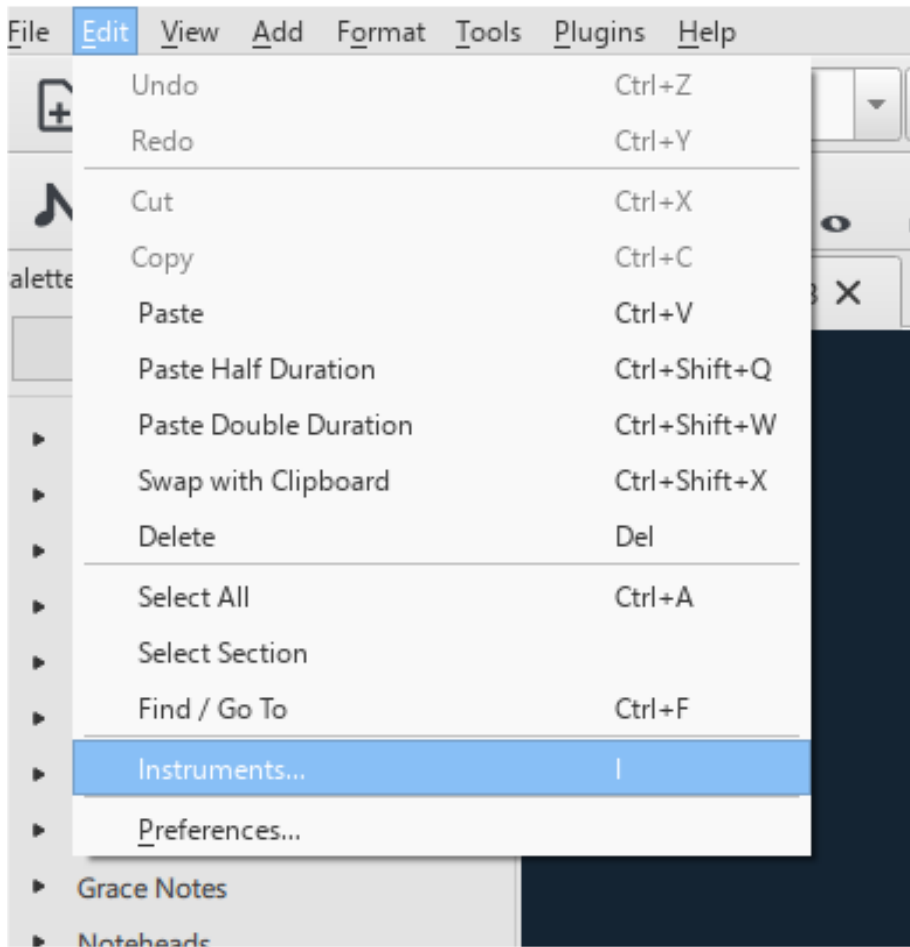




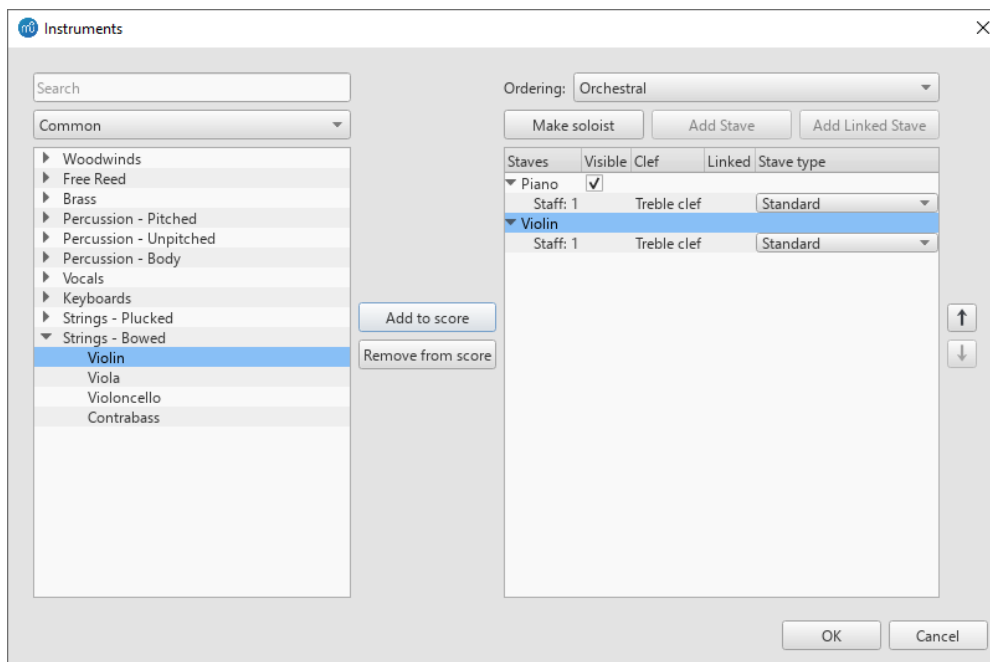
Now OK it actually produces a score.

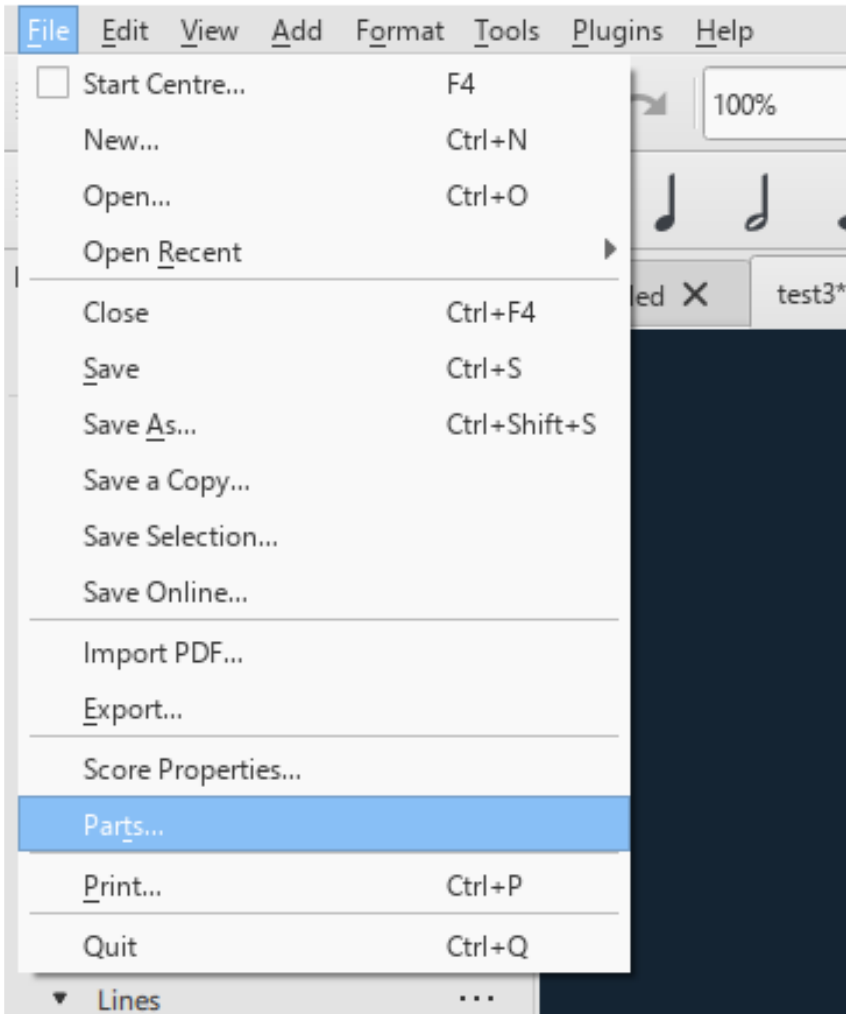
(Did not do so earlier

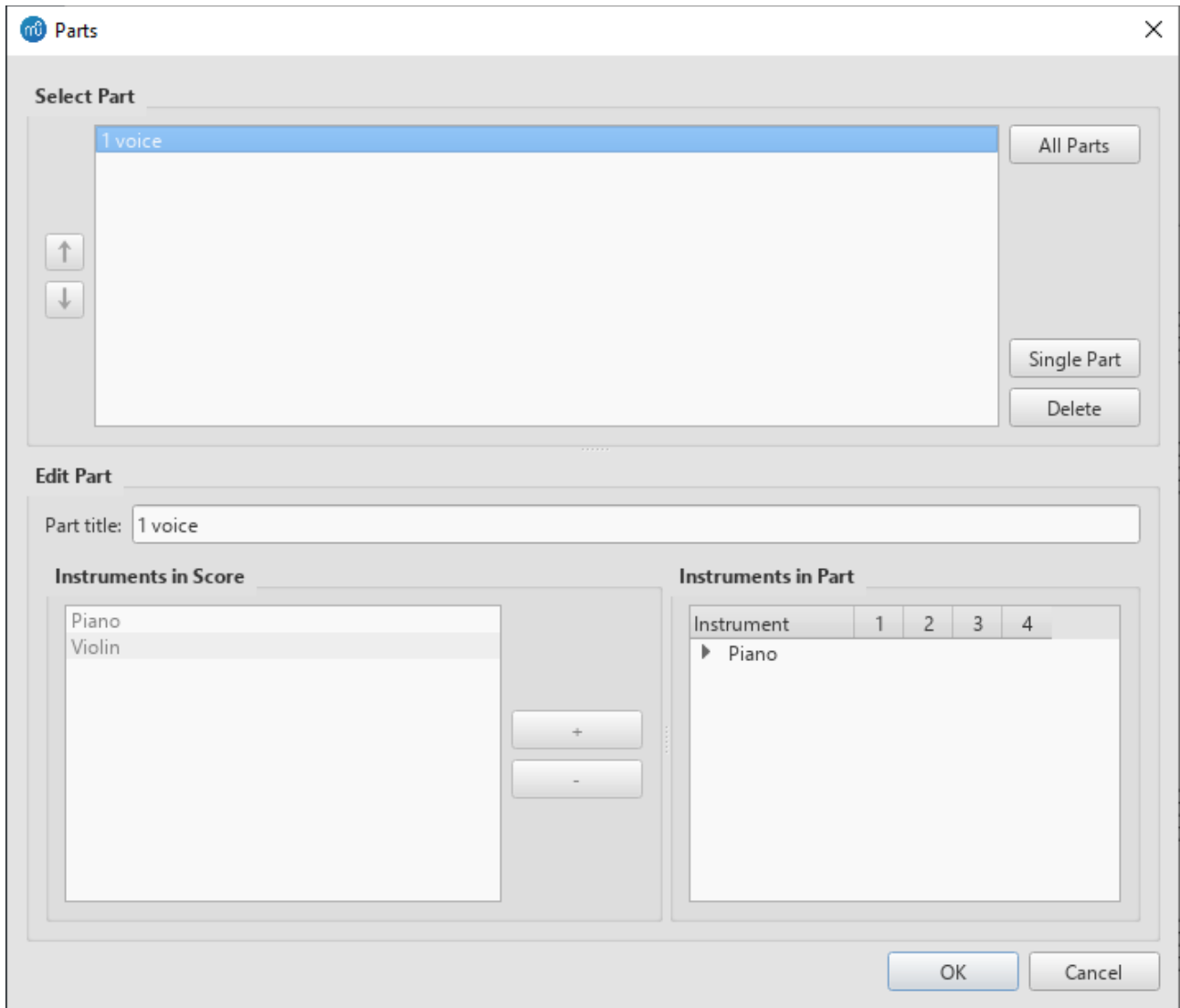
## MuseScore 3: test3



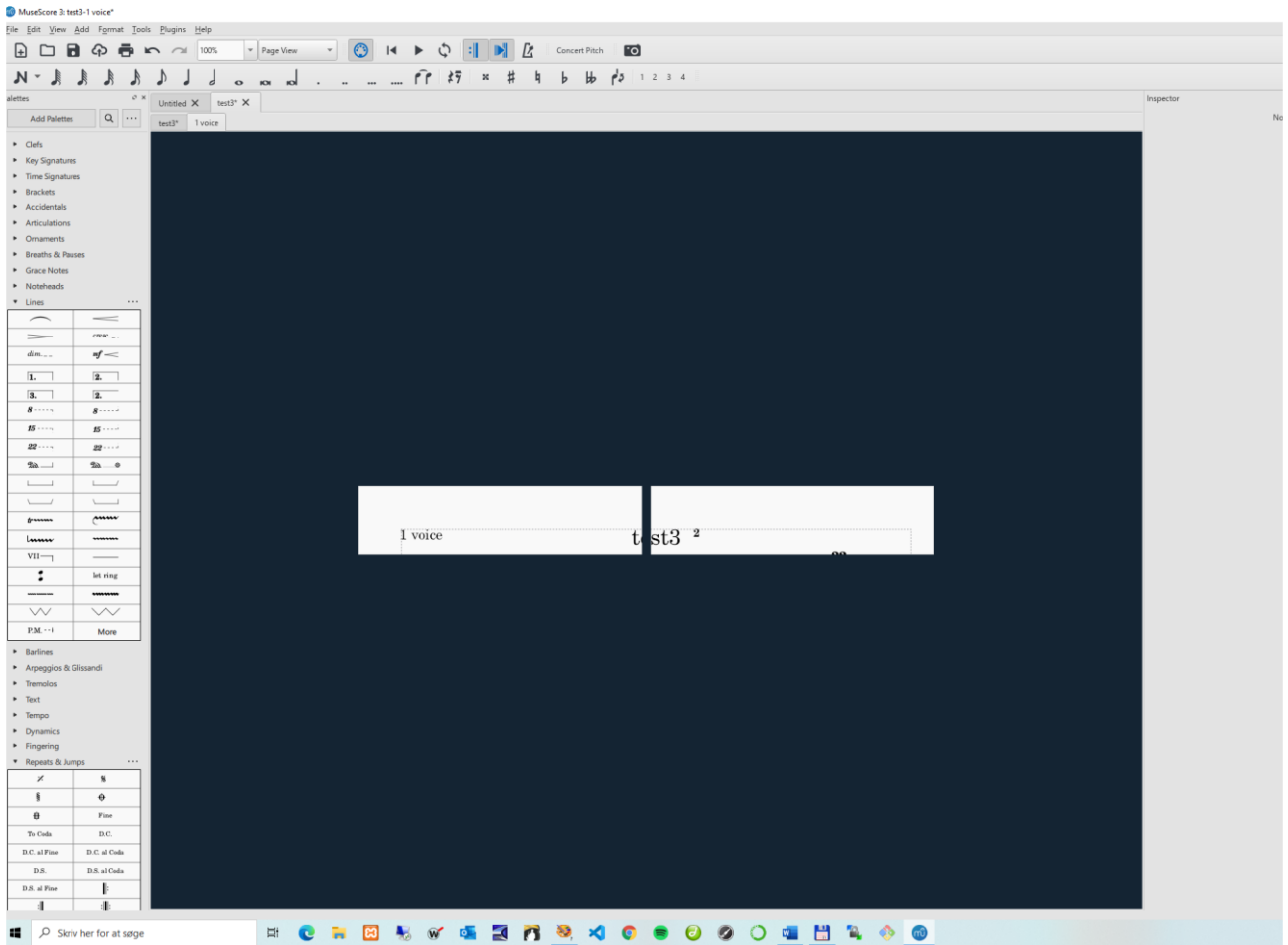
### Add second voice



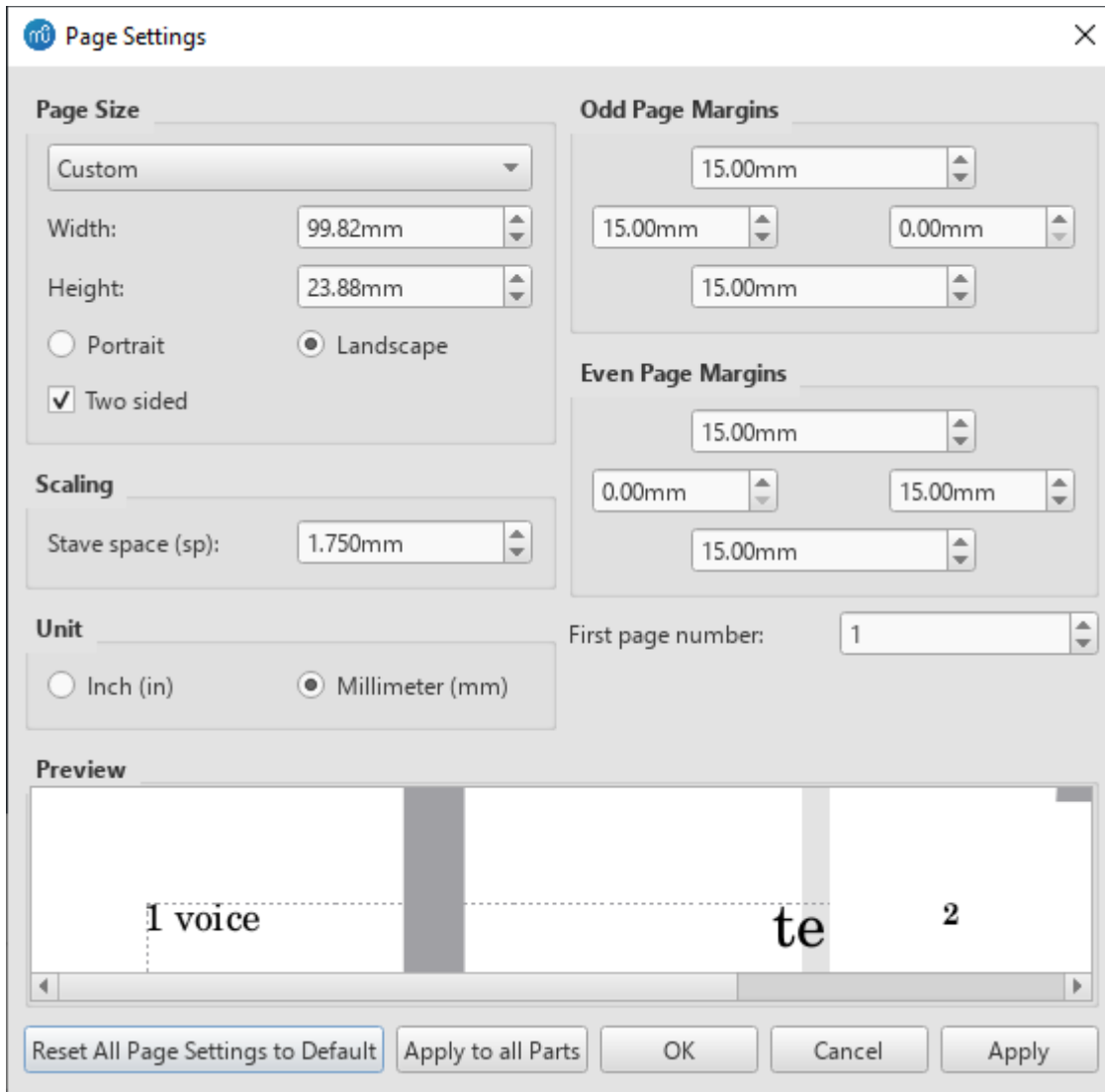




**Create first voice**



**This is no good**



**Go to page setting,**

**Reset all page setting to default does not work. (Will give the corrupted custom format)**

**But if I select A4 and apply to part will work**

